



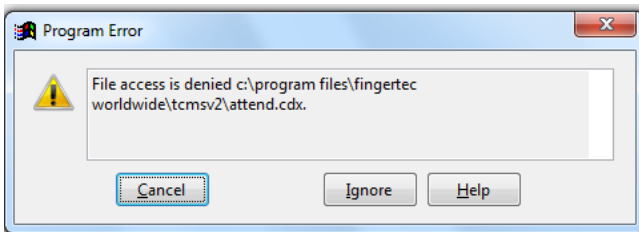
FingerTec USA  
768 Bedford Avenue  
Brooklyn, NY 11205

Tel: 1-646-898-0505  
Fax: 1-646-786-4714  
<http://www.fingertecusa.com>  
[info@fingertecusa.com](mailto:info@fingertecusa.com)

## TA300 Quick Setup Instructions

Plug your TA300 directly into the USB port on your computer and load the software from the DVD or download from <http://fingertecusa.com/downloads-page-24>

Once the TCMS V2 icon appears on the desktop make sure you have admin rights and run the program. If it gives you the below error message, follow the instructions to change to admin by 1A.



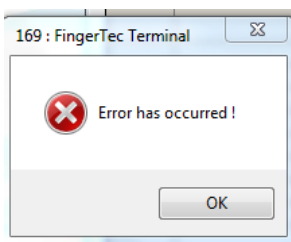
### 1A- ADMIN

To change to run as admin- Right click on the FingerTec TCMS V2 icon on the desktop then click on Properties, followed by Compatibility, then check the Run As Admin box and hit Apply & OK.

Next follow the setup wizard to complete the software setup until you get to the below screen

Disabled	Product Key	Activation	ID	Group	Description	Model	Serial No.	Connection	Baudrate	IP Address	Port	Key
<input checked="" type="checkbox"/>	QBEG-7NJU-NUZ5		1	0		TA300		USB/Client	115200	192.168.1.201	4370	

Change product to TA300 and make sure the TA300 is plugged in and turned on. Then uncheck disabled.



If an error message 169 comes up then hold down the power button for 3 seconds until it turns off and turn it back on.

Then uncheck the Disabled box again. Then click new release once the software open for the latest software.

Lastly, follow the manual how to setup your schedule **Flexi** (whenever they clock in and out) or **Weekly** (set schedule).